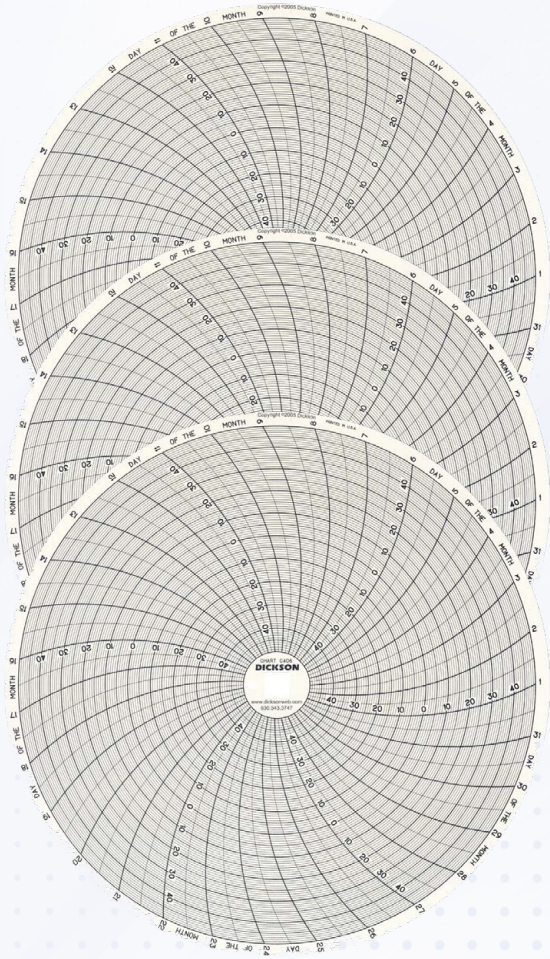


# Charts & Pens



Model	Range	24 Hour Charts	7 Day Charts
KT8-20 KT8-21	-100° TO 0°F/C	C497	C499
	-20° TO 20°F/C	C445	C448
	-50° TO 50°F/C	C411	C414
	0° TO 100°F/C	C410	C412
	0° TO 150°F	C425	C435
	0° TO 250°F	C432	C439
	20° TO 100°F/C	C446	C449
KT8-30 KT8-31	50° TO 150°F	C447	C450
	-100° TO 0°F/C	C497	C499
	-50° TO 50°F/C	C411	C414
	-20° TO 20°F/C	C445	C448
	0° TO 100°F/C	C410	C412
	0° TO 150°F/C	C425	C435
	0° TO 250°F/C	C432	C439
	0° TO 500°F/C	C428	C459
	0° TO 1000°F/C**	C441	C440
	0° TO 2000°F**	C443	C444
KT8-40	20° TO 100°F/C	C446	C449
	50° TO 150°F	C447	C450
	-100° TO 0°F/C	C497	C499
	-50° TO 50°F/C	C411	C414
	-20° TO 20°F/C	C445	C448
	0° TO 100°F/C	C410	C412
	0° TO 150°F/C	C425	C435
	0° TO 250°F/C	C432	C439
	0° TO 500°F	C428	C459
	20° TO 100°F/C	C446	C449
KT8-50	50° TO 150°F	C447	C450
	-50° TO 50°F/C	C411	C414
	-20° TO 20°F/C	C445	C448
	0° TO 100°F/C	C410	C412
	0° TO 150°F/C	C425	C435
	0° TO 250°F/C	C432	C439
	20° TO 100°F/C	C446	C449
TH8-10	50° TO 150°F/C	C447	C450
	-20°F TO 120°F*	C415	C417
	-20°C TO 50°C*	C472	C473
	40°F TO 110°F	C476	C477
TH8-11 TH8-11R TH8-12	5°C TO 40°C	C478	C479
	-20°F TO 120°F*	C415	C417
	-20°C TO 50°C*	C472	C473
	40°F TO 110°F	C476	C477
	5°C TO 40°C	C478	C479
TH8-12	0° TO 200°F	-	C437

\*Full range requires 10' extension cable // \*\*A203 High temp probe required

SKU	Description	Variable
P222	6 red pens	Temperature
P226	6 blue pens	Humidity
P246	3 red, 3 blue pens	Temperature & humidity
P266	3 red, 3 blue pens	Dual channel

**DICKSON**  
Environmental Monitoring + Compliance Experts

Tecpel.com.tw

Tel: 886-2-2218-3111